

FBISD

QVMS & GTA Gifted Services

September 25, 2024



Lead
THE PAC

National Association for Gifted Children (NAGC)

Students with Gifts and Talents:

- Come from all racial, ethnic, and cultural populations, as well as all economic strata.
- Require sufficient access to appropriate learning opportunities to realize their potential.
- Can have learning and processing disorders that require specialized intervention and accommodation.
- Need support and guidance to develop socially and emotionally as well as in their areas of talent.
- Require varied services based on their changing needs.

Texas Education Agency (TEA)

The Texas Education Agency defines a gifted/talented student as a child who performs at or shows the potential for performing at a remarkably high level of accomplishment when compared to others of the same age, experience, or environment and who

- exhibits high performance capability in an intellectual, creative, or artistic area;
- possesses an unusual capacity for leadership; or
- excels in a specific academic field. (Texas Education Code [§29.121](#))

Goal

What is our goal for gifted students?

In alignment with the Texas State Goal for Services for Gifted/Talented Students and Fort Bend ISD's Mission and Vision, the purpose of Fort Bend ISD's Gifted and Talented Services is to provide students identified for gifted services with opportunities to develop their capabilities and demonstrate skills in self-directed learning.

How will we know students have achieved the goal?

The ability to develop innovative products and performances that reflect creativity and individuality in addition to refined research, critical thinking, and communication skills will serve as evidence of mastery of the goal.

What do we do to help students achieve the goal?

In Fort Bend ISD, GT Services take the form of educational interventions- content extensions, curricular alternatives, and advanced level projects in the core foundational curricular areas- Math, Science, ELA, and Social Studies, provided during the school day along with self-directed goals indicated in the GT Learning Plan.



GT Services in Secondary includes...

Secondary (6 – 12)

- ☐ Advanced Academics Courses (AAC)
- ☐ Advanced Placement Courses (AP)
- ☐ Dual Credit Courses



Cluster Grouping

- Gifted and Talented students are ensured opportunities to work together as a group, work with other students, and work independently during the school day as well as the entire school year.
- GT students are placed together for instruction in the appropriate content area(s) for which they have been identified in cluster grouping.
- Teachers are trained to adapt curriculum and instruction for their gifted learners.

Meet our teams!

Sixth Grade GTA

Teacher	Subject
Ms. Harrison / Ms. Carter	ELA
Ms. Khandwalla	Math
Ms. Benjamin	Science
Ms. Connolly / Mr. Zavodny	Social Studies
Ms. Gonzalo	Spanish



Meet our teams!

Seventh Grade GTA

Teacher	Subject
Mr. Pulliam / Ms. Lofters	ELA
Ms. Momin	Math
Dr. Magee / Ms. Blackmon / Ms. Morales	Science
Mr. Zavodny / Ms. Maly	Social Studies
Ms. Lee / Mr. Torres	Spanish



Meet our teams!

Eighth Grade GTA

Teacher	Subject
Ms. Diaz-Wu	ELA
Ms. Phan / Ms. White	Math / Algebra / Geometry
Ms. Morales / Ms. Clement / Dr. Magee	Science / Biology
Mr. Duvernay	Social Studies
Ms. Rincón / Ms. Lee	Spanish



Differentiation is...

“... a teacher’s response to a *gifted* learner’s needs.”
(Carol Ann Tomlinson)

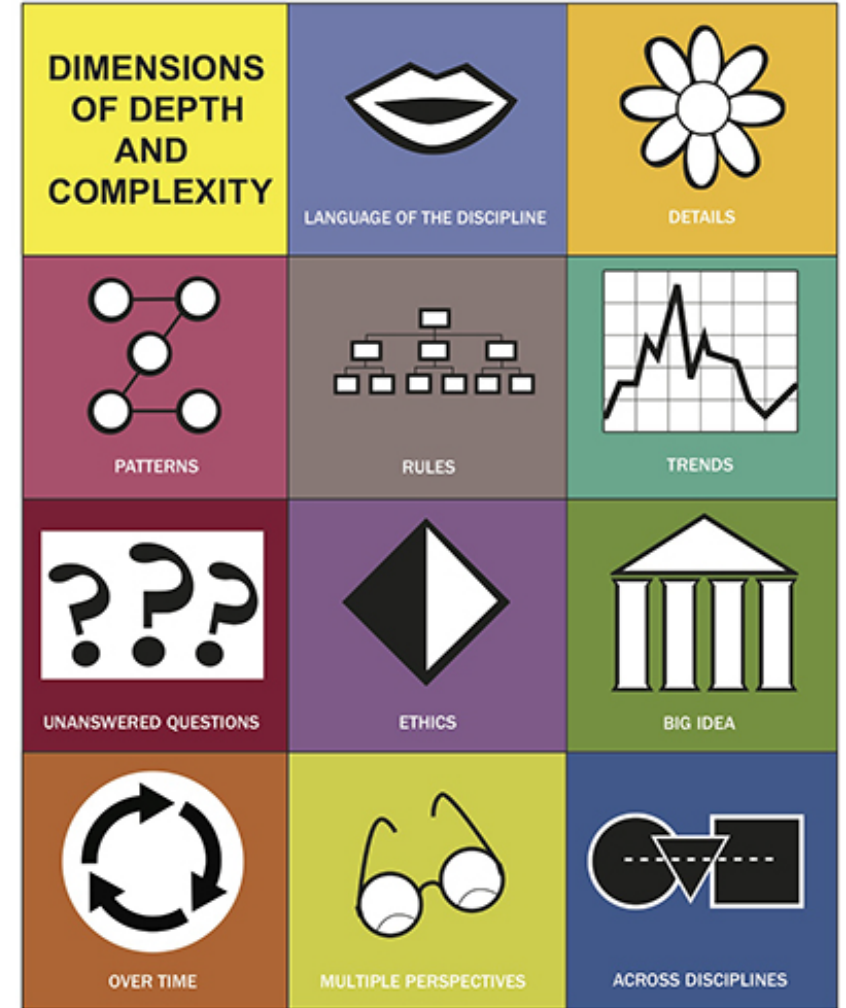
“... customizing instruction so every **gifted learner** experiences continuous learning.” (Bertie Kingore)

How do we differentiate?

Depth & Complexity Icons

(JTaylor Education, depthcomplexity.com)

Team Concepts...



1. FOUNDATIONS

A STRONG FOUNDATION AND UNDERSTANDING OF PATTERNS WORK TOGETHER TO BUILD A STRONG KNOWLEDGE BASE.

4. EXPLORATION

EXPLORATION (THE ART OF SEEKING NEW INFORMATION, AREAS OR IDEAS) CAN FUEL OUR CREATIVITY (THE ABILITY TO TRANSCEND TRADITIONAL WAYS OF THINKING OR DOING)

2. INTERDEPENDENCE

THE UNDERSTANDING AND APPRECIATION OF ONE'S SELF WHILE RESPECTING OTHERS LEADS TO UNITY AND POSITIVE OUTCOMES.

3. PERSPECTIVES

EMBRACING DIVERSE INTERACTIONS SHAPES THE ABILITY TO SEE THINGS FROM VARIOUS POINTS OF VIEW (PERSPECTIVES).



GTA 6 EXPLORERS CONCEPTS

FBISD Gifted & Talented

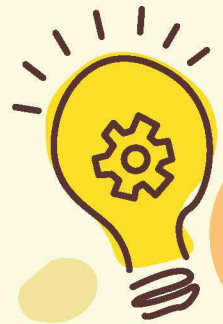


ACADEMY



1. INFLUENCES

Motivation is a valuable commodity. Multiplied by action and meaningful influences, its value fluctuates.



2. POWER DYNAMICS

Power exists in every relationship. A balance of power involves trust, communication and vulnerability from all involved.

GTA 7 MAGNETIX CONCEPTS



4. PROGRESS

Consistency drives progress. Consistency means progressing little by little, step by step, regularly working every day.



3. ORDER AND CHAOS

Order cannot exist without chaos; it is born out of chaos. Both exist in everything and in every situation.



1. INNOVATION

Change and Innovation, radical or incremental, is a necessary condition for the survival in all living things and in open systems.

4. REFLECTION

Self-reflection offers us the opportunity to challenge our way of thinking about ourselves, our past experiences and other concepts and ideas.

GTA 8 DYNAMIC CONCEPTS

2. MINDFULNESS

Connecting with yourself helps you connect with others. Mindful education is beneficial to our overall well-being.

3. BALANCE

Finding balance can mean embracing the turbulence of transformation.



GT Initiatives



GT Learning Plan

GT Learning Plan

The GT Learning Plan (GTLP) is a written record of gifted and talented programming utilized with each gifted child. and provides opportunities for students to develop academic and affective (social and emotional) goals.

The GTLP provides opportunities for students to develop academic and affective (social and emotional) goals that are monitored by the teacher and student.

Gifted and Talented Learning Plan: SMART Goals

- SMART goals describe the specific and measurable programming emphasis for annual learning and growth
- The areas selected as priorities for SMART goals are monitored through ongoing assessment.
- SMART Goals are linked to specific instructional strategies.
- Planning guide for making instructional decisions about materials, programming options and assessments for gifted students based upon strengths, interests, and social-emotional needs.

GT Learning Plans Secondary

August 19-September 13

- Initial Conference
- Goal Development

September 16-20

- GT Learning Plan Goals due (Draft)
- Upload GT Learning Plan Monitoring Model in Schoology
(Advisory, lunch bunch, content teams)

September 23-27

- Draft Goals shared with parents
- Monitoring Teacher shared with Parents

September 26-30

- Finalized Goals entered in Skyward





Texas Performance Standards Project

Texas Performance Standards Project

The Texas Performance Standards Project (TPSP) provides GT students with an opportunity to share their in-depth knowledge of a topic of interest.

The TPSP is a required classroom learning experience for students in 1st-8th grade. Participation in TPSP in 9th - 12th grade is recommended.



Additional Information

Acceleration Options in Fort Bend ISD

- Curriculum Compacting
- Partial Acceleration, by Content
- Self-Paced Instruction
- Credit by Exam
- Advanced Placement
- Dual Credit
- Collegiate Enrichment Courses



Visit www.fortbendisd.com/gifted
for the full presentation on **Acceleration Options in FBISD**

Parent Resources

- **SENG** –Supporting Emotional Needs of Gifted
 - www.sengifted.org
- **NAGC** –National Association of Gifted Children
 - www.nagc.org
- **TAGT** –Texas Association for the Gifted and Talented
 - www.txgifted.org
- **PACE** –Parents for Academic Excellence
 - www.pacefortbend.org

Parent Resources



<https://www.davidsongifted.org/>



<http://cty.jhu.edu/>



<https://www.destinationimagination.org/>



www.giftedandtalented.com

Our Contact Info

Joe Bernhart

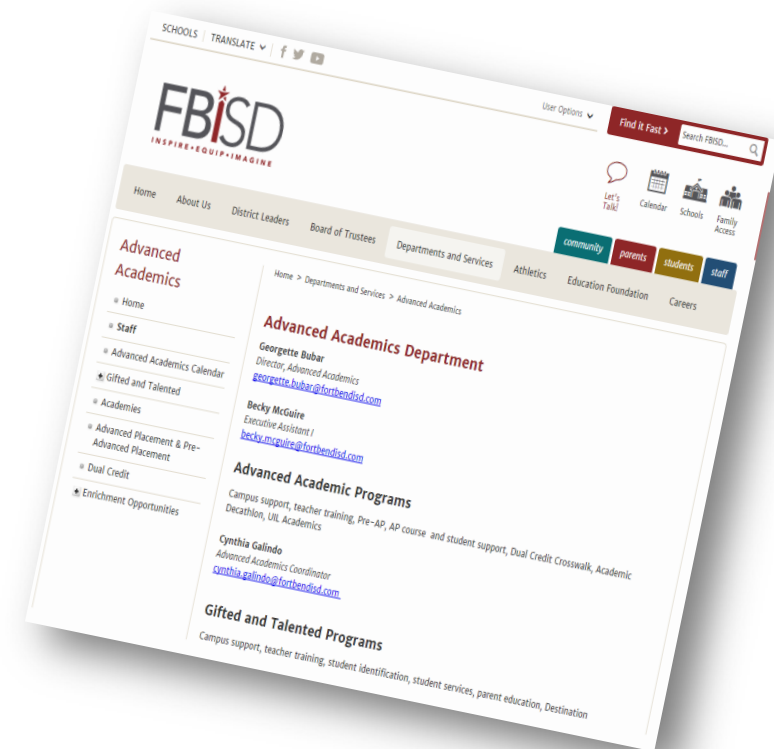
GT Coordinator

Joseph.Bernhart@fortbendisd.gov

Doreen Lee

Champion of Gifted Services

Tu.Lee@fortbendisd.gov



THANK
YOU